

Richard McLaughlin Architect

Richard McLaughlin Architect

775 South Hudson Avenue
Pasadena, California 91106
C: 626.786.2364

rmcl@earthlink.net
www.richardmclaughlinarchitect.com

Richard McLaughlin Architect



Richard H. McLaughlin Architect
Principal

EDUCATION

University of Minnesota, Minneapolis, Minnesota
Masters of Architecture

University of Denver, Colorado
Bachelor of Science in Business Administration

PROFESSIONAL EXPERIENCE

Principal
Richard McLaughlin Architect

Project Architect
Langdon Wilson Architecture Planning,
Los Angeles, California

Designer
Winsor/Faricy Architects, Inc.,
St. Paul, Minnesota

PROFESSIONAL ACTIVITIES AND AFFILIATIONS

City of Pasadena Design Review Commission
Past Chairman

University of Minnesota, Minneapolis
Teaching Assistant / Architecture Department

ACCREDITATION

Licensed architect in the State of California
NCARB Certification.



Richard McLaughlin Architect



RICHARD MCLAUGHLIN ARCHITECT
Is a design organization providing complete services in the fields of Architecture and Planning for commercial, industrial, residential, and institutional facilities with particular expertise in adaptive reuse.

The firm was established in 1984 with a Strong commitment to creativity and cost Effectiveness. Each project receives personal attention – from inception through completion the results of which are aesthetic solution that prove to be commercially successful.

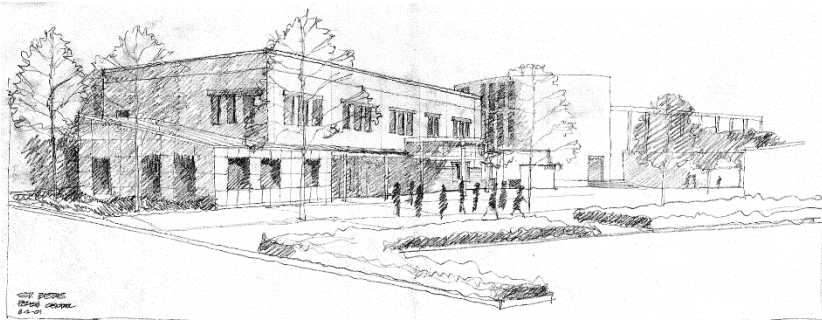
Specific services of the firm include:

ARCHITECTURE

- Design
- Construction Documents
- Construction Administration
- Cost Estimating
- Computer Modeling
- Specifications
- Interior Design
- Tenant Improvements
- Model and Rendering Preparations

PLANNING

- Pre-Entitlement Analysis
- Land Planning
- Programming
- Feasibility Studies
- Development Cost Analysis
- Site Selection Studies
- Project Scheduling
- Development Management



Richard McLaughlin Architect



REFERENCES

Community Bank
Thomas Baker, Chief Operating Officer
460 Sierra Madre Villa
Pasadena, California
626.974.2830

Narver Associates Insurance Services
641 West Las Tunas Drive
San Gabriel, CA 91776

Wesley G. Hampton, President
626-943-2200



George C. Hopkins Construction Company, Inc.
919 West Glenoaks Boulevard
Glendale, CA 91202

Gary Hopkins, President and CEO
818-956-0533